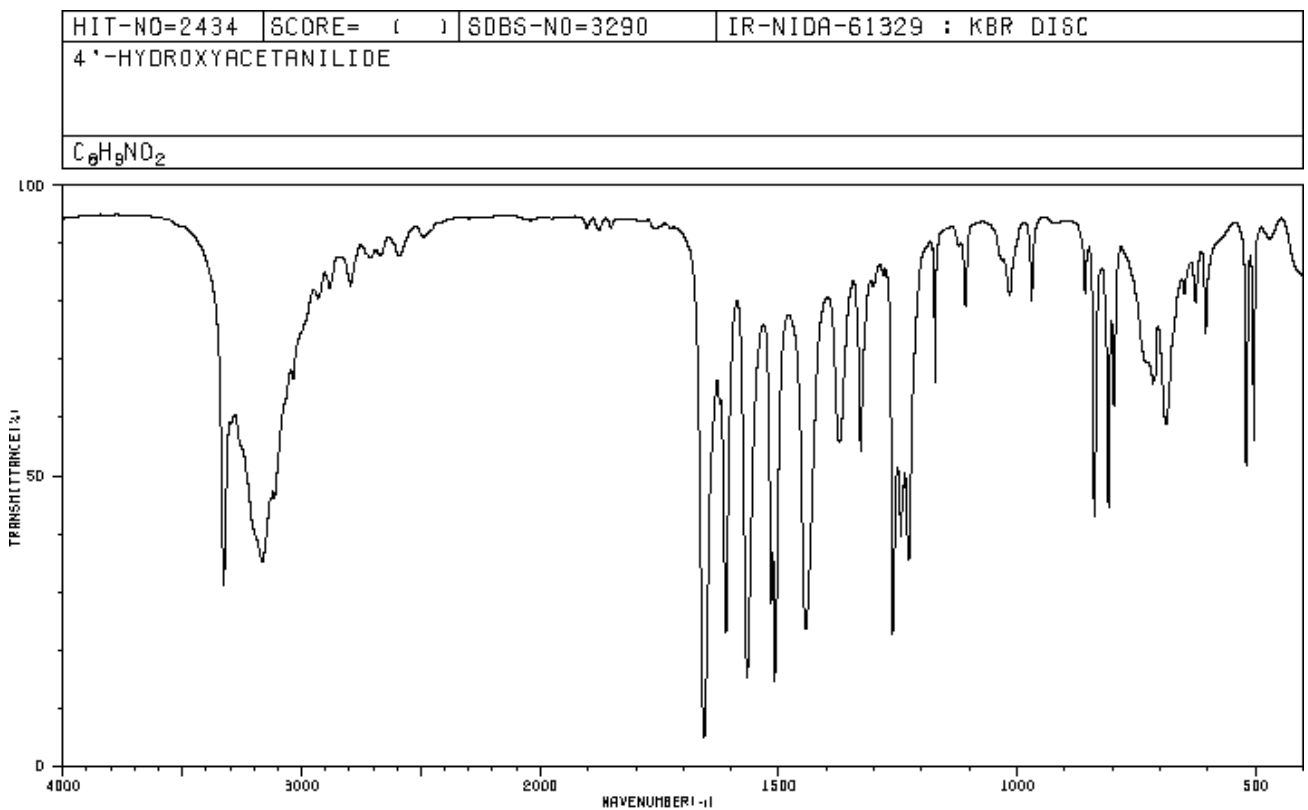


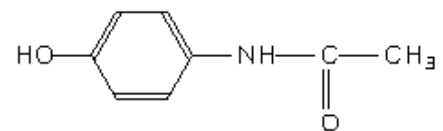


# ESPECTROSCOPIA DEL ACETAMINOFEN

## ESPECTRO DE IR

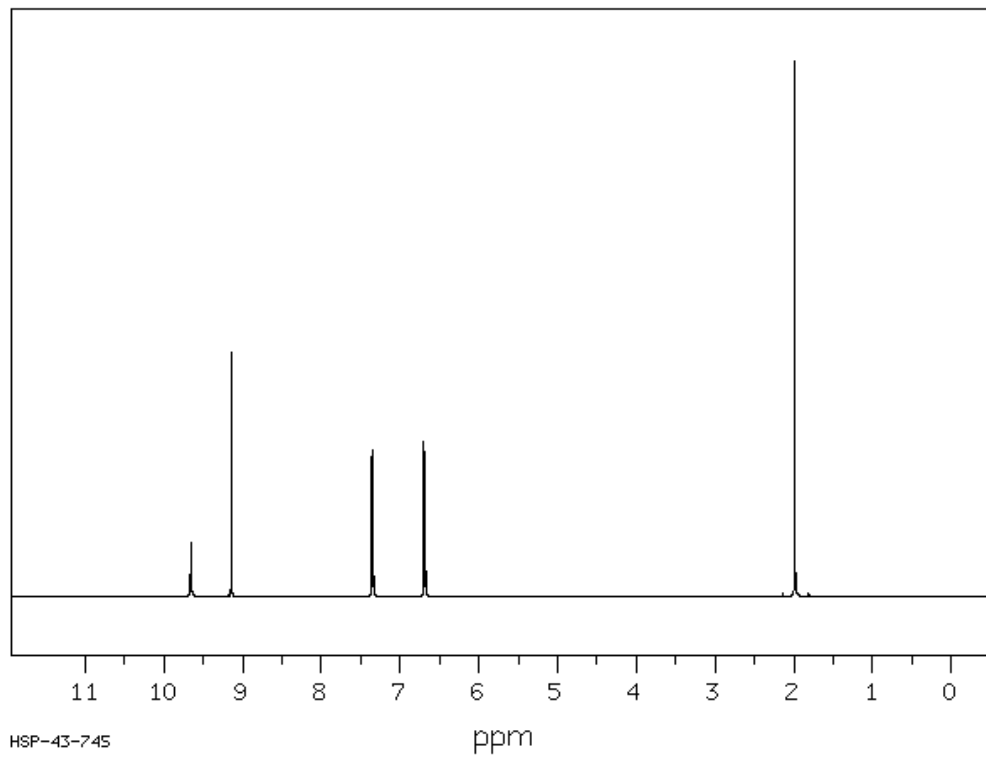


3326	30	1667	4	1373	63	1108	77	716	62
3165	33	1624	60	1329	52	970	77	689	57
3149	37	1611	21	1261	21	858	78	650	79
3114	44	1567	14	1244	37	839	41	626	77
3036	64	1516	26	1238	46	809	42	605	72
2950	77	1509	19	1226	34	787	60	521	49
2796	79	1444	22	1173	64	729	66	504	63

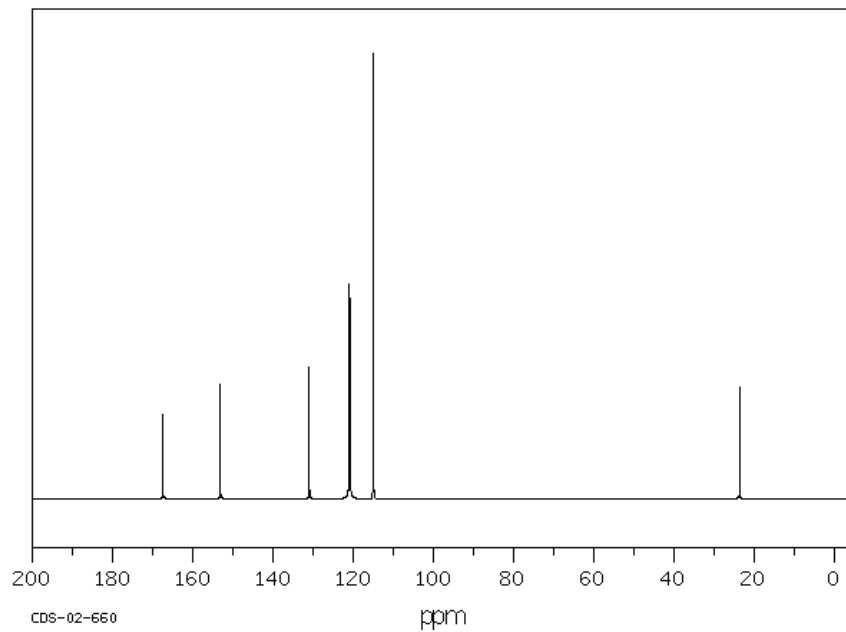




## ESPECTRO DE $^1\text{H}$ RMN



## ESPECTRO DE $^{13}\text{C}$ RMN





## ESPECTRO DE MASAS

